

ADVANCING STATES



Leadership, innovation, collaboration
for state Aging and Disability agencies

Utah Elder Abuse Awareness Conference, June 15, 2022

Kathy Greenlee, Senior Director for Elder Justice Programs
former U.S. Assistant Secretary for Aging
former Kansas Secretary of Aging

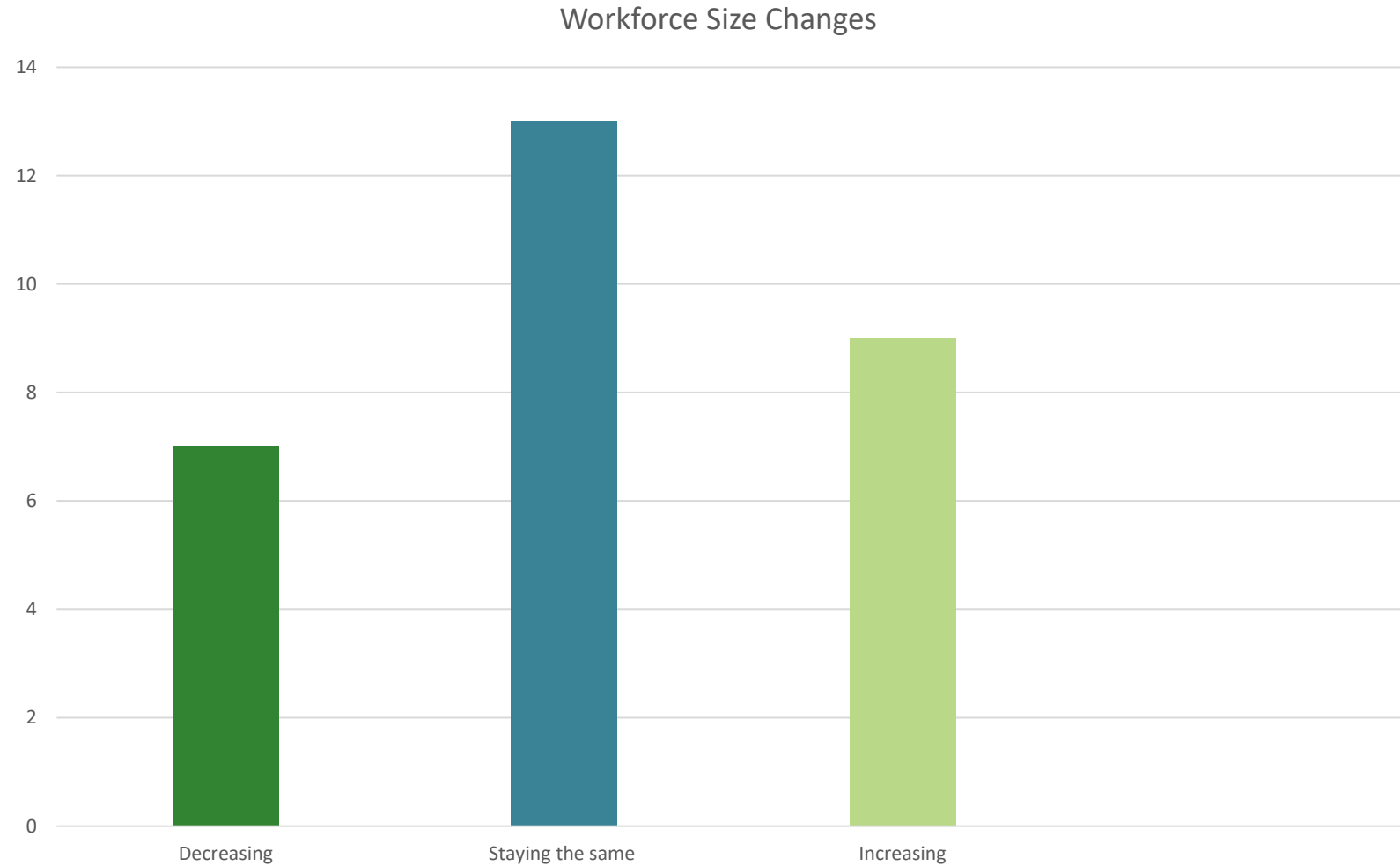
World Elder Abuse Awareness Day

- International Network for the Prevention of Elder Abuse (INPEA) in 2006
- United Nations General Assembly recognized in 2011
- Professor Elizabeth Podnieks, Professor Emerita Ryerson University, Canada
- #WEAAD615 social media challenge
- Elder Justice Coalition @ElderJustice
- National Center on Elder Abuse
 - <https://ncea.acl.gov/WEAAD.aspx>

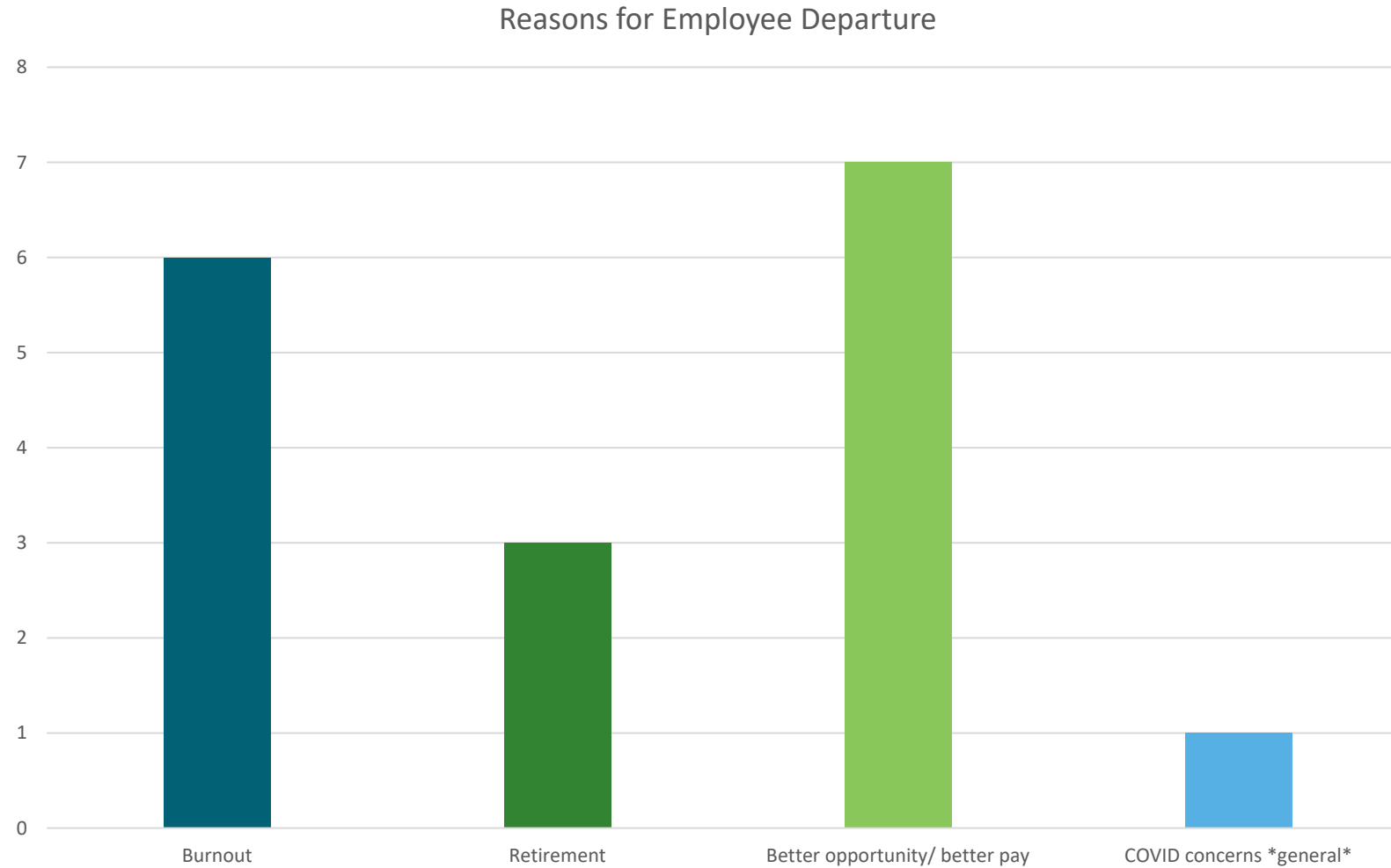
All-State Survey

- National Adult Protective Services Association (NAPSA) and ADvancing States all-state survey in 2012
- “Adult Protective Services in 2012: Increasingly Vulnerable”
- http://www.advancingstates.org/sites/nasuad/files/hcbs/files/218/10851/NASUAD_APS_Report.pdf
- 2022 survey covers general APS and self-neglect

Workforce Size

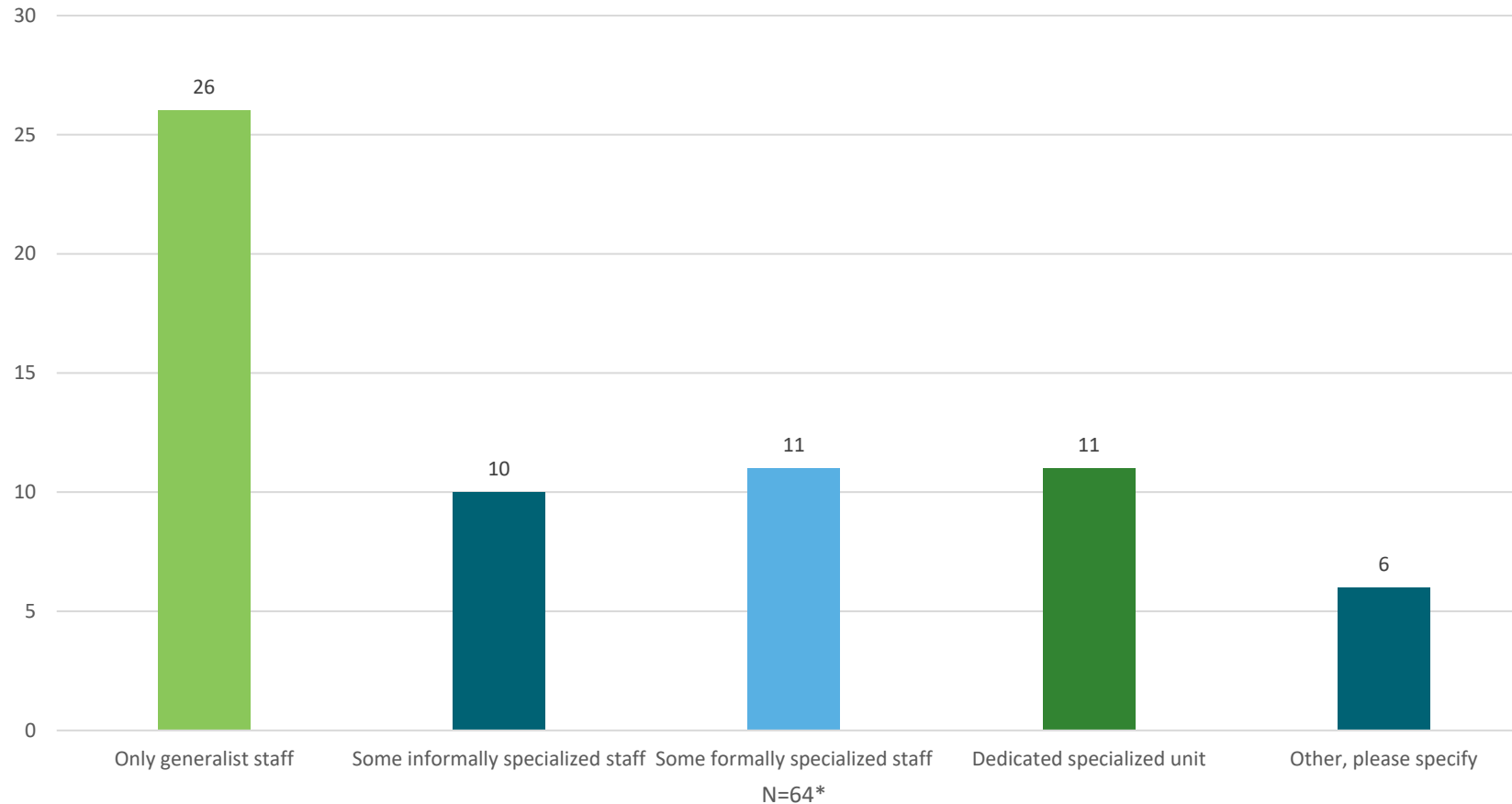


Reasons for Workforce Shrinkage



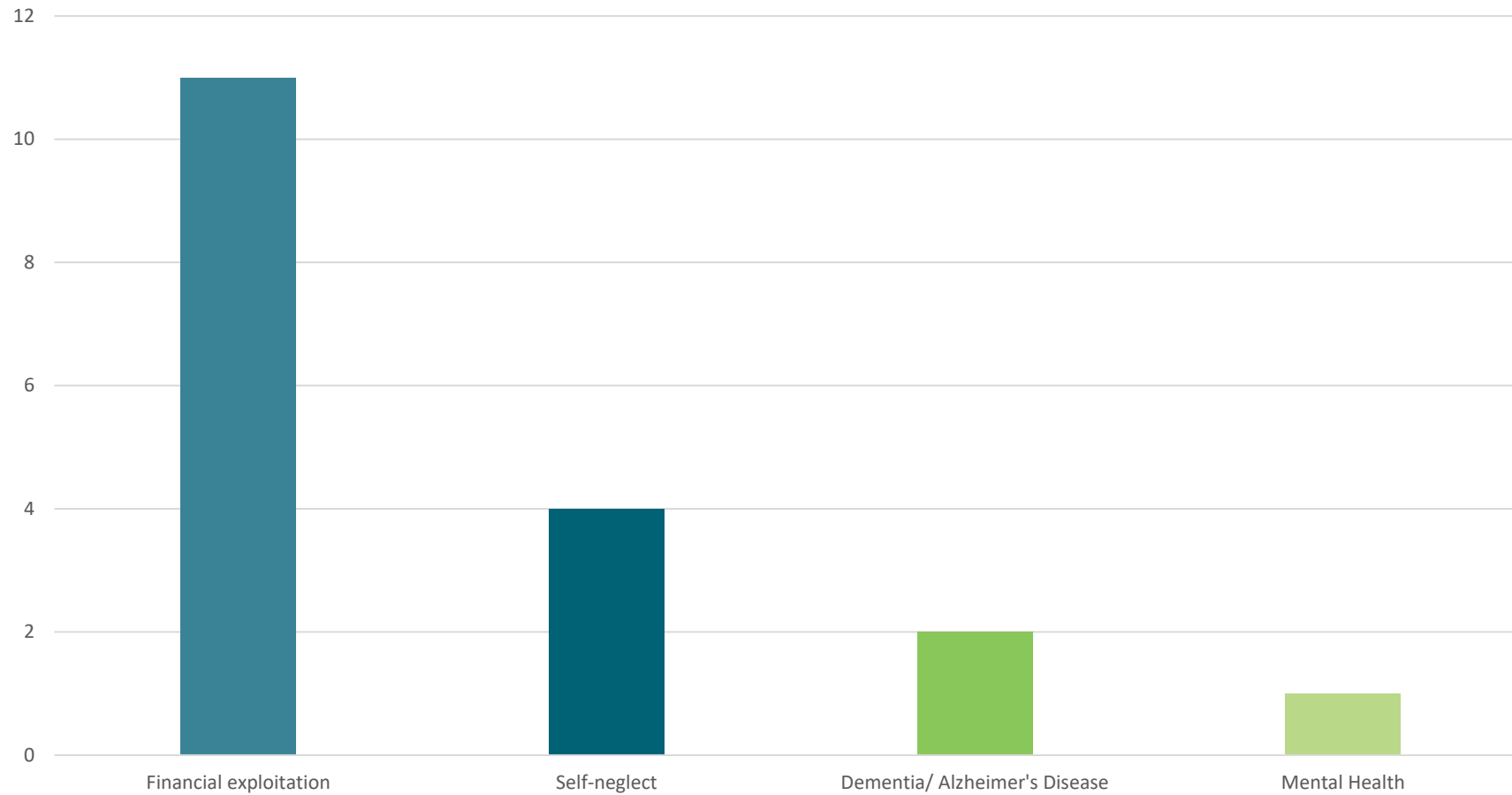
APS use of generalists versus specialist

APS Staff Specialization (multiple answers permitted)



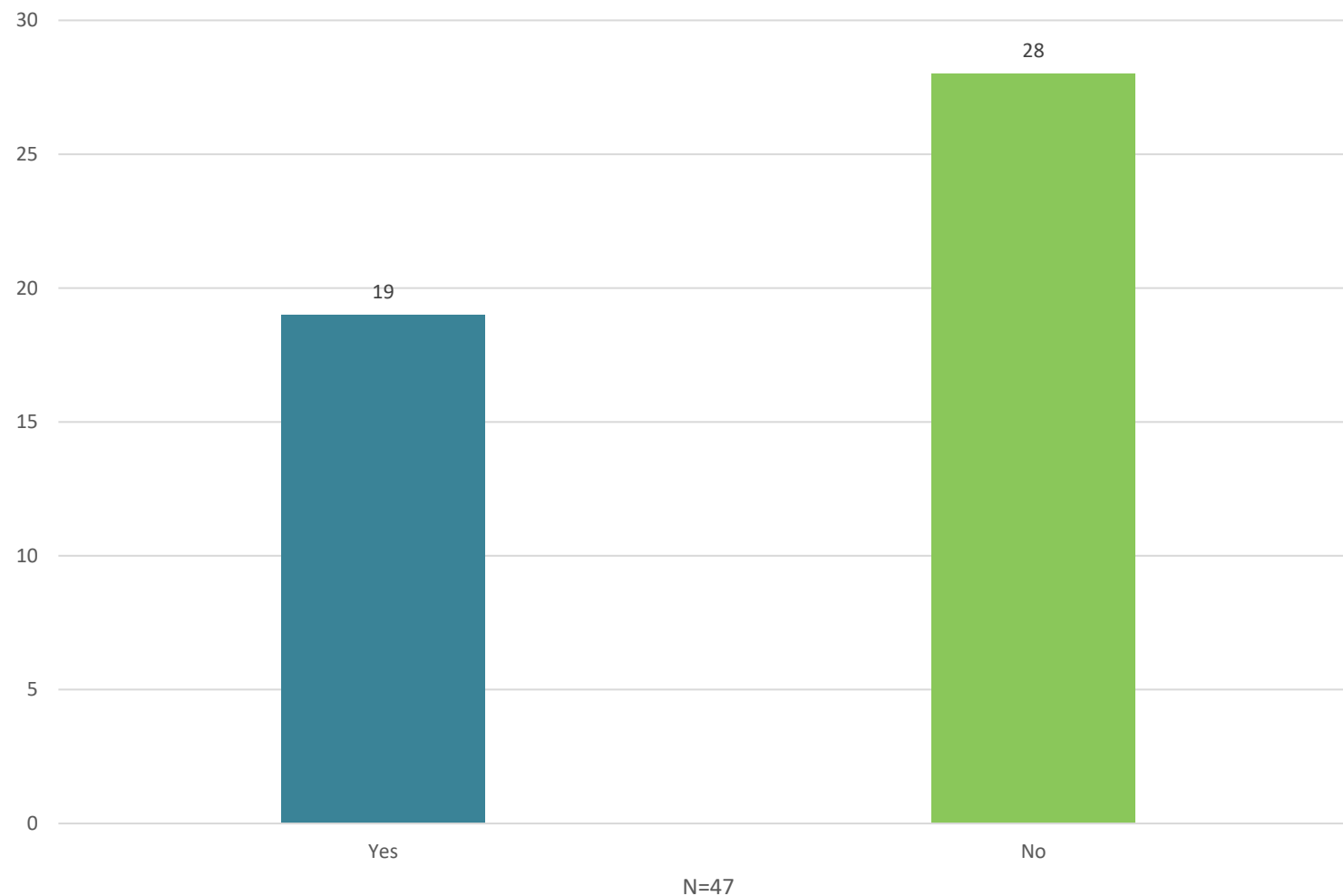
Specialists

Where do your Specialists Specialize?

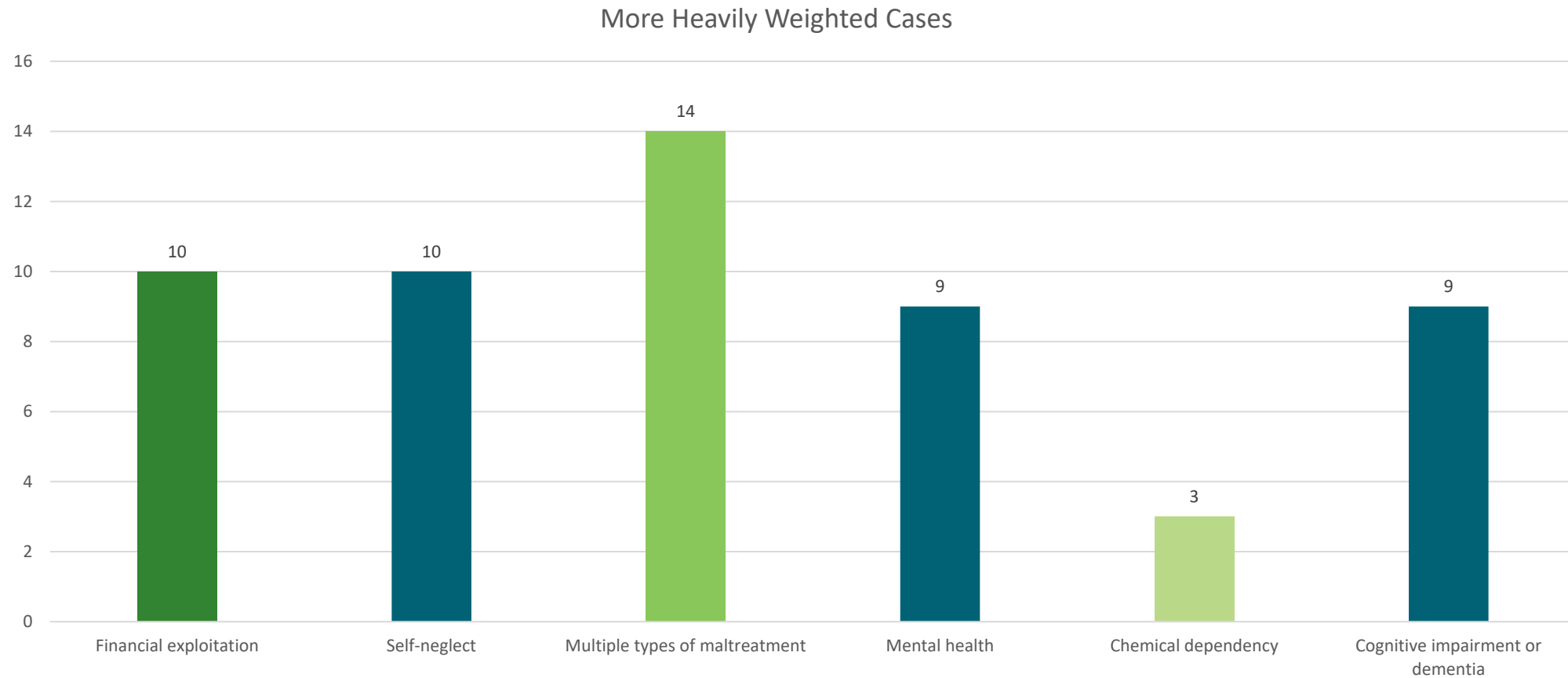


Weighted Caseloads

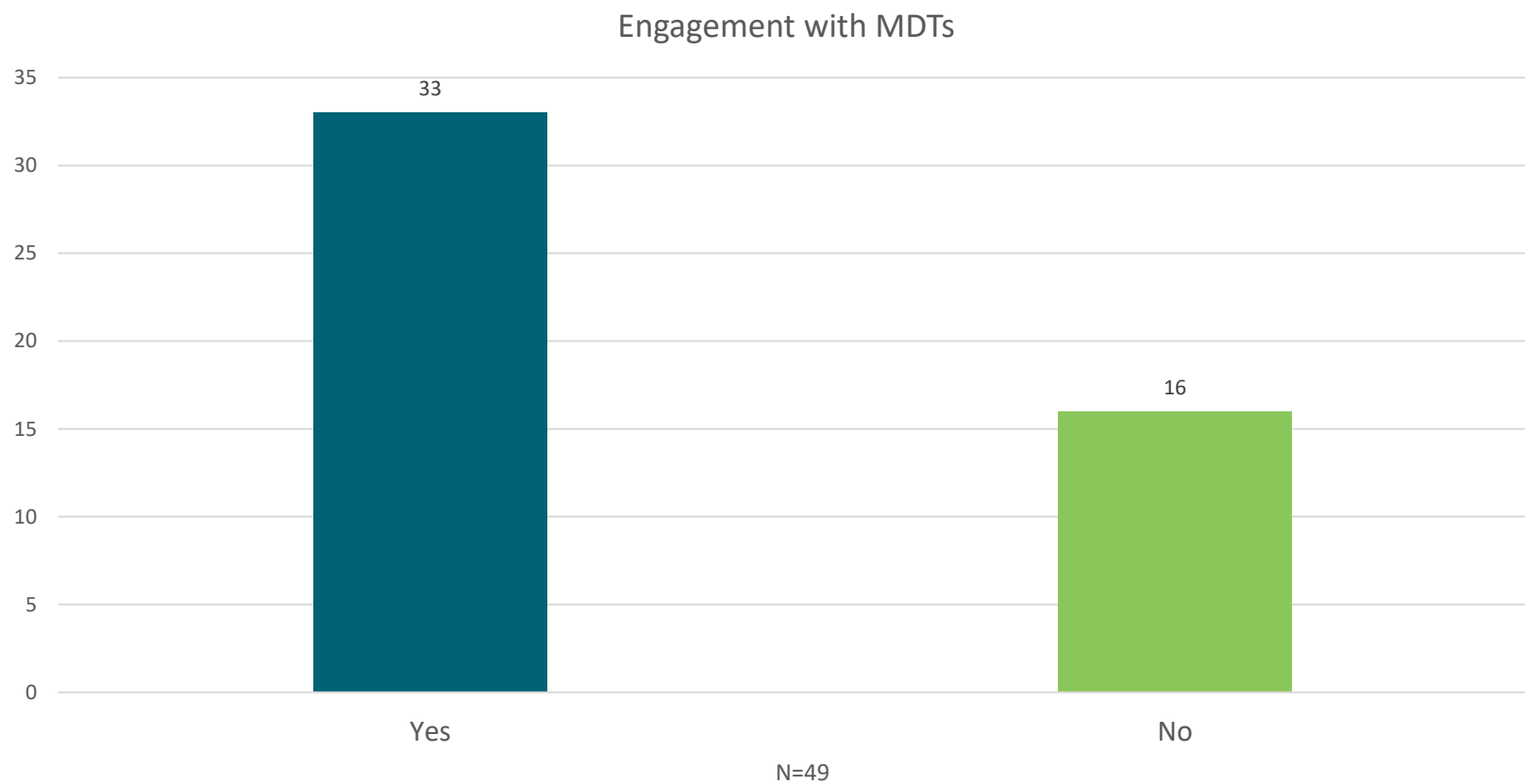
Weighted Caseloads



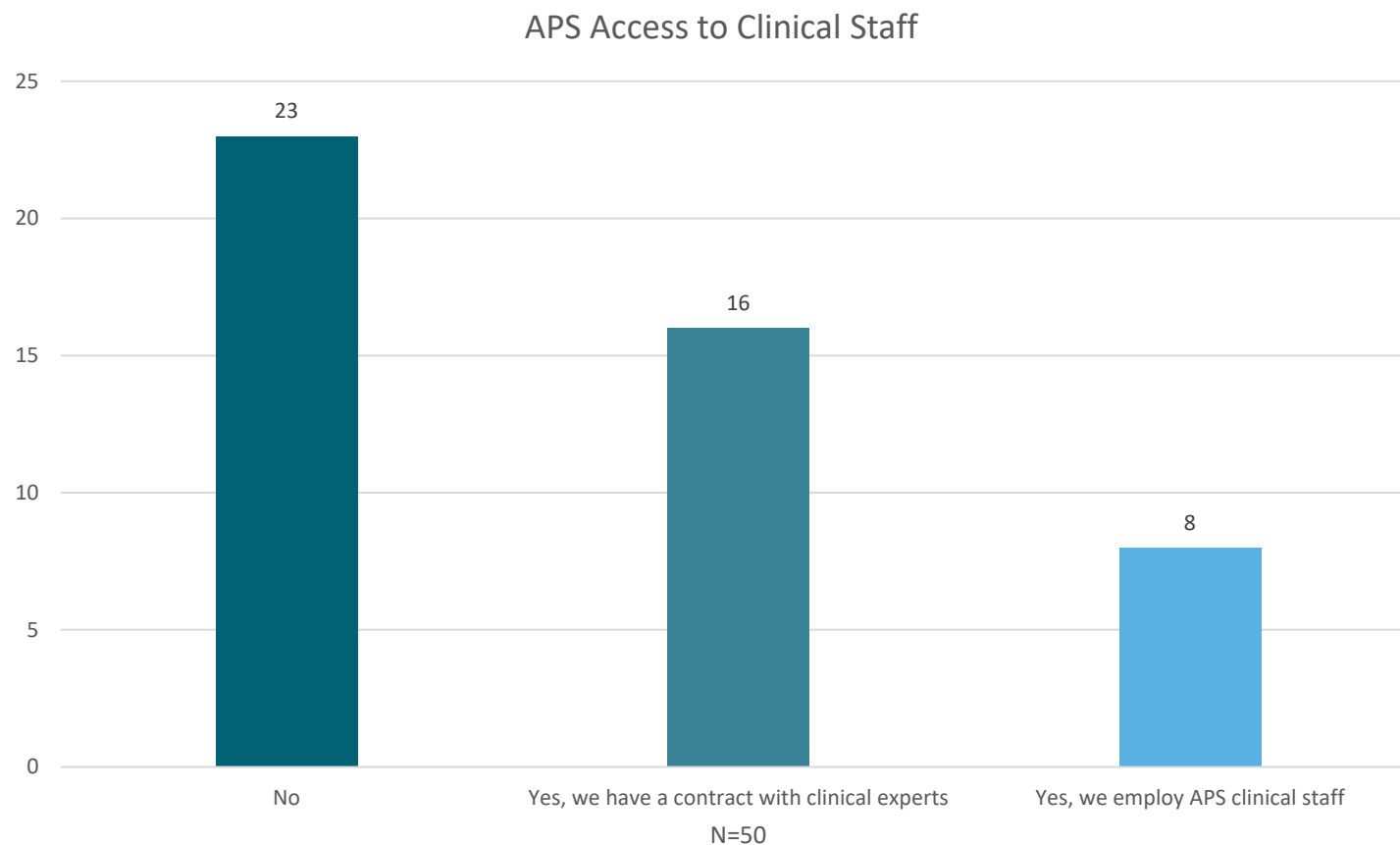
Weighted Caseloads (cont'd)



Multi-Disciplinary Teams



Access to clinical experts



National Adult Maltreatment Reporting System (NAMRS)

| 2019 Allegation Type | 2020 Allegation Type |
|-------------------------|-------------------------|
| 51.0% self-neglect | 49.2% self-neglect |
| 24.0% neglect | 24.6% neglect |
| 23.8% exploitation | 24.6% exploitation |
| 12.6% physical abuse | 13.1% physical abuse |
| 1.6% sexual abuse | 1.5% sexual abuse |

***Some cases have multiples types of abuse*

The language is a problem

Experts feel that SN occurs in those who lack mental capacity and is not a choice*

The term self-neglect is pejorative (expresses contempt or disapproval)

Self-neglect connotes intentionality that may not exist

“Cases of self-neglect” is not a person-centered description

Have not located a suitable synonym for the term

In the very least we can use “person first” language

**Epidemiology of Elder Self-Neglect, by Carmel Dyer and Carlos Reyes-Ortiz, published in Elder Abuse: Research, Practice and Policy, Springer Publication, 2017.*

NAMRS: Self Neglect Definition

A person's inability, due to physical or mental impairment or diminished capacity, to perform essential self-care tasks including obtaining essential food, clothing, shelter, and medical care; obtaining goods and services necessary to maintain physical health, mental health, or general safety; hoarding; or managing one's own affairs.

Health Outcomes Associated with Self-Neglect

- Higher mortality
- Functional decline
- Poor nutritional status
- Non-compliance with medical treatment
- Increased hospitalization
- Increased hospital readmission
- Higher number of emergency room visits
- Increased hospice utilization
- Increased nursing home admission

*Epidemiology of Elder Self-Neglect, by Carmel Dyer and Carlos Reyes-Ortiz, published in Elder Abuse: Research, Practice and Policy, Springer Publication, 2017.

Less Research on Self-Neglect than Elder Abuse

To characterize the severity of self-neglect, three domains of indicators have been identified:

Personal hygiene

Impaired function

Environment neglect

Epidemiology of Elder Self-Neglect, by Carmel Dyer and Carlos Reyes-Ortiz, published in Elder Abuse: Research, Practice and Policy, Springer Publication, 2017.

Basically

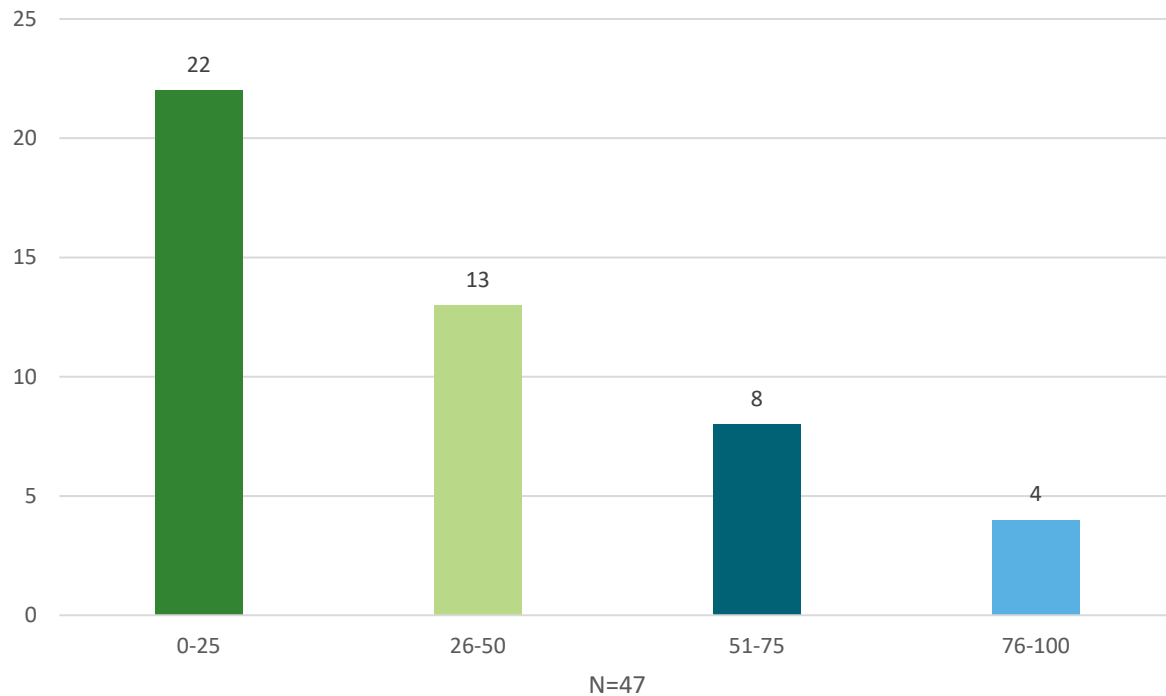
The characteristics of self-neglect and outcomes demonstration the condition of self-neglect is chronic not acute.

Adult Protective Services is designed for emergent problems and not long-term support.

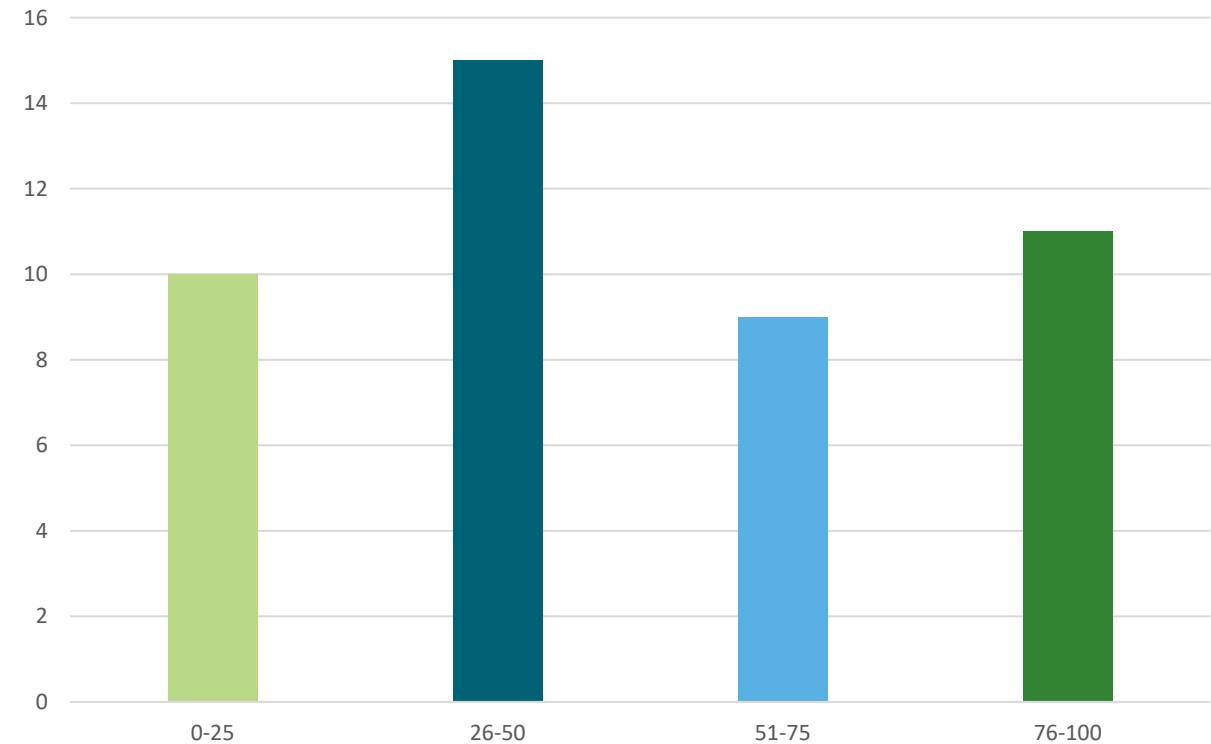
Cases of self-neglect have a high percent of recidivism to APS

Need for longer-term support

Case Management for All Clients



Case Management for Clients Experiencing Self Neglect



Most common services

- In home assistance services (bathing, dressing, grooming, medication management)
- Care/ Case Management
- Housing and relocation services
- Emergency assistance and material aid services
- Medical and dental services

Community Services

- Administration for Community Living (ACL) is funding innovations in transitions from APS to Community Services
- Utah APS and Utah AAAs working to develop an innovative practice to address caretaker neglect and provide resources to alleged victims and perpetrators.
- Offering case management services to clients with allegation of caretaker neglect AFTER case closure.

Innovation Everywhere

- The National Collaboratory to Address Elder Mistreatment:
<https://www.edc.org/national-collaboratory-address-elder-mistreatment>
- Elder Mistreatment Emergency Department Toolkit:
<https://gedcollaborative.com/toolkit/elder-mistreatment-emergency-department-toolkit/>
- Community Connections Roadmap:
https://gedcollaborative.com/wp-content/uploads/2022/02/Elder_Mistreatment_Community_Connections_Roadmap_Feb2022.pdf

Community Connections

- Aging networks
- Health services
- Public safety and legal services
- Housing
- Clergy and faith communities
- Emergency medical services
- Financial institutions
- Municipal leaders
- Business leaders

Call to Action

- My three questions:
 1. Are any of the older adults you know abused?
 2. Do you know who they are?
 3. Do you know what they need from you?

Stay in touch

kgreenlee@advancingstates.org